

SPECIFICATIONS

Model			SK70SR Offset Boom Specification
Performance			
Bucket Capacity	ISO heaped	m³	0.28
	Struck	m³	0.22
Swing Speed	min ⁻¹ {rpm}		11.5 {11.5}
Travel Speed	km/h		5.3/2.8
Gradeability	% {°}		70 {35}
Bucket Digging Force	kN {kgf}		52.5 {5,300}
Arm Crowding Force	kN {kgf}		40 {4,080}
Drawbar Pulling Force	kN {kgf}		71.3 {7,310}(ISO7464)
Weight			
Operating Weight	kg		8,550
Ground Pressure	kPa {kgf/cm²}		38 {0.39}
Shoe Width	mm		450
Engine			
Model		ISUZU 4LE2X	
Type		Direct injection, water cooled, 4-cycle, 4cylinder diesel engine with turbocharger, intercooler	
Rated Power Output		42 kW/2,200 min ⁻¹ (ISO14396: 2002)	
		41 kW/2,200 min ⁻¹ (ISO9249: 2007)	
Max. Torque		211 N·m/1,600 min ⁻¹ {rpm} (ISO14396: 2002)	
Fuel Tank		200 N·m/1,600 min ⁻¹ {rpm} (ISO9249: 2007)	
		120	
Blade			
Width x Height		mm	
Working Range (Height/Depth)		mm	
		2,320 x 460	
		355/245	
Side Digging Mechanism			
Type		Boom swing	
Offset Volume	To the left	mm	1,050
	To the right	mm	1,330
Hydraulic System			
Pump		One variable displacement pump +1 gear pump	
Max. discharge flow	L/min		1 x 32, 1 x 18
Relief valve setting	MPa		29.4
Swing Motor		Axial piston motor	
Travel Motors		2 x axial piston, two-step motor	
Hydraulic Oil Tank		L	90: System (72: Tank level)

STANDARD EQUIPMENT

ENGINE

- Engine, ISUZU 4LE2XCUA, Diesel engine with turbocharger
- Automatic engine deceleration
- Auto Idle Stop (AIS)
- Batteries (2 x 12V - 64Ah)
- Starting motor (24V - 3.2 kW), 30 amp alternator
- Automatic engine low idle for low engine oil pressure
- Engine oil pan drain cock
- Double element air cleaner

CONTROL

- Working mode selector (H-mode, S-mode)

SWING SYSTEM & TRAVEL SYSTEM

- Swing rebound prevention system
- Straight propel system
- Two-speed travel with automatic shift down
- Sealed & lubricated track links
- Grease-type track adjusters
- Automatic swing brake
- Dozer blade

MIRRORS & LIGHTS

- Four rearview mirrors
- Two front working lights

OPTIONAL EQUIPMENT

- Various optional arms
- Wide range of shoes
- Boom safety valve
- Arm safety valve
- Level 2 FOPS Guard (ISO 10262)
- Front-guard protective structures (May interfere with bucket action)
- Additional hydraulic circuit
- Add-on counterweight
- Cab light
- Control pattern changer (2 way, 4 way)

Note: Standard and optional equipment may vary. Consult your KOBELCO dealer for specifics.

Note: This catalog may contain attachments and optional equipment that are not available in your area. And it may contain photographs of machines with specifications that differ from those of machines sold in your areas. Please consult your nearest KOBELCO distributor for those items you require. Due to our policy of continuous product improvements all designs and specifications are subject to change without advance notice. Copyright by **KOBELCO CONSTRUCTION MACHINERY CO., LTD.** No part of this catalog may be reproduced in any manner without notice.

KOBELCO CONSTRUCTION MACHINERY CO., LTD.

17-1, Higashigotanda 2-chome, Shinagawa-ku, Tokyo 141-8626 JAPAN
Tel: +81 (0) 3-5789-2146 Fax: +81 (0) 3-5789-2135
www.kobelco-kenki.co.jp/english_index.html

Inquiries To:

Hydraulic Excavators

ACERA
GEOSPEC SK70SR

Offset Boom Specification

- Bucket Capacity:
0.22, 0.28 m³ ISO heaped
- Engine Power:
42 kW (57 PS)/2,200 min⁻¹{rpm}
(ISO14396)
- Operating Weight: (with Dozer)
8,550 kg



Complies with the latest exhaust emission regulations



US
EPA Tier III



EU (NRMM)
Stage IIIA



Japanese
Regulations

Comfort and Safety Support Smooth Operation

Newly Designed ‘Big Cab’

The new Big Cab provides a roomy operating space with plenty of legroom, and the door opens wide for easy entry and exit. As well as giving a wide, open view to the front, the cab has increased window areas on both sides and to the rear, for improved visibility in all directions.



Comfortable Operating Environment



Double slide seat



Powerful automatic air conditioner



Two-speaker FM/AM radio with station select



One-touch look release simplifies opening and closing front window



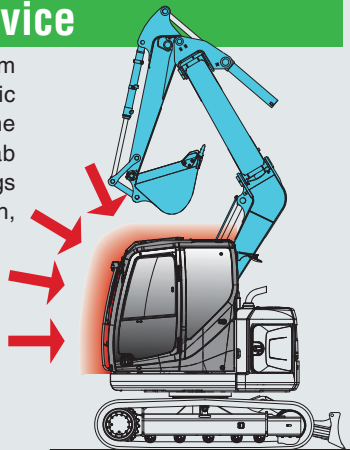
Large cup holder



Spacious luggage compartment

Cab Protection Device

When digging with the boom raised high, this automatic shutdown function prevents the bucket from damaging the cab through a mechanism that brings the attachment to a smooth, gradual stop.



Work Range Limiter



This feature prevents damage to walls, beams and buried structures by limiting the depth, height, and left-handed offset value reached by the attachment. It both prevents unwanted contact with external objects and facilitates side-wall digging and other repetitive operations.

- The operator can set operational limitations and positional information for the bucket when engaged in side-wall digging.

ROPS Cab

The newly developed, ROPS (Roll-Over Protective Structure)-compliant cab clears ISO standards(ISO-12117-2: 2008) and ensures greater safety for the operator should the machine tip over.



- Level 2 FOPS Guard (ISO 10262) is available as option.
- To fit vandalism guards, please contact your KOBELCO dealer.

Many Safety Features



Firewall



Hammer of emergency exit



Retractable seatbelt



Optional boom holding valve



Level indicator that shows degree of machine tilt

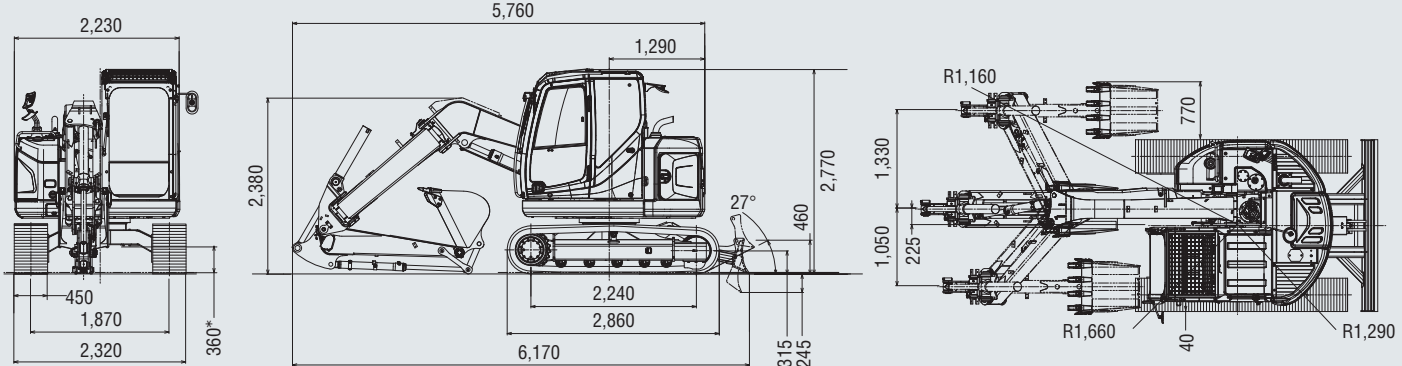
- Firewall separates the pump compartment from the engine
- Thermal guard prevents contact with hot components during engine inspections
- Optional boom holding valve prevents the boom from dropping if the hydraulic piping is severed

SK 70SR

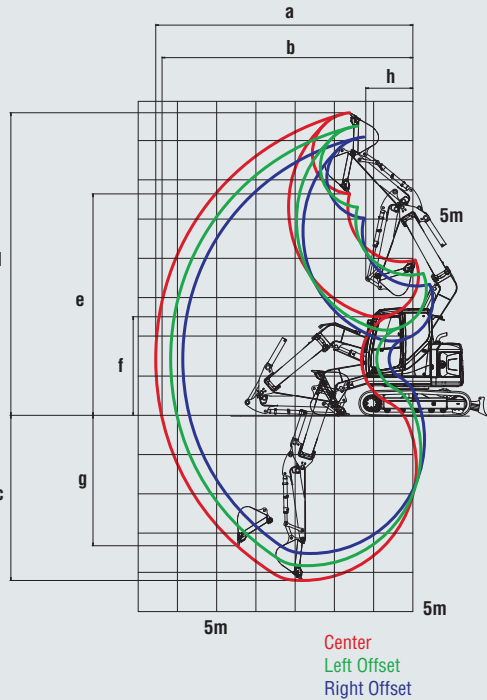
DIMENSIONS

Standard Arm: 1.86 m Bucket: 0.28 m³ *without including height of shoe lug.

Unit: mm



WORKING RANGE



Boom Arm	Offset Boom Specification					
	Standard: 1.86 m			Long: 2.16 m		
Offset	Max. Left	Center	Max. Right	Max. Left	Center	Max. Right
a- Max. digging reach	6.17	6.55	5.86	6.43	6.81	6.12
b- Max. digging reach at ground level	6.00	6.39	5.68	6.26	6.66	5.94
c- Max. digging depth	3.83	4.21	3.52	4.13	4.51	3.82
d- Max. digging height	7.37	7.71	7.09	7.58	7.91	7.30
e- Max. dumping clearance	5.30	5.64	5.03	5.51	5.85	5.23
f- Min. dumping clearance	2.17	2.51	1.89	1.88	2.22	1.60
g- Max. vertical wall digging depth	2.97	3.32	2.67	3.24	3.58	2.95
h- Min. swing radius	1.49	1.20	2.11	1.29	1.28	2.11
Bucket capacity ISO heaped m³	0.28			0.22		

Operating Weight & Ground Pressure

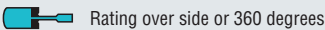
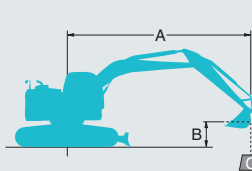
Standard Configuration

Shaped	Triple grouser shoes (even height)	
Shoe width	mm	450 600
Overall width of crawler	mm	2,320 2,470
Ground pressure	kPa (kgf/cm²)	38 (0.39) 29 (0.30)
Operating weight	kg	8,550 8,700

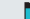
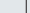
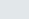
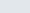
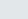

Optional Configuration

Operating weight without dozer	kg	8,050 8,260
Ground pressure without dozer	kPa (kgf/cm²)	36 (0.36) 27 (0.28)

LIFTING CAPACITIES



- A - Reach from swing centerline to bucket hook
- B - Bucket hook height above/below ground
- C - Lifting capacities in kilograms
- Relief valve setting: 29.4 MPa

SK70SR		Arm: 1.86 m Bucket: 0.28 m³ ISO heaped 210 kg Shoe: 450 mm						
A B		3.0 m		4.5 m		At max. reach		Radius
								
6.0 m	kg	*510	*510			*1,960	*1,960	3.26 m
4.5 m	kg	*490	*490	1,700	1,410	1,530	1,270	4.71 m
3.0 m	kg	*2,600	*2,370	1,590	1,310	1,100	890	5.40 m
1.5 m	kg	2,830	2,220	1,410	1,140	930	750	5.62 m
GL	kg	2,490	1,910	1,270	1,010	930	730	5.43 m
-1.5 m	kg	2,430	1,850	1,230	970	1,120	880	4.77 m
-3.0 m	kg	*1,530	*1,530			*1,330	*1,330	3.38 m

Notes:

- Do not attempt to lift or hold any load that is greater than these lift capacities at their specified lift point radius and heights. Weight of all accessories must be deducted from the above lift capacities.
- Lift capacities are based on machine standing on level, firm, and uniform ground. User must make allowance for job conditions such as soft or uneven ground, out of level conditions, side loads, sudden stopping of loads, hazardous conditions, experience of personnel, etc.
- Bucket lift hook defined as lift point.

- The above lifting capacities are in compliance with SAE J/ISO 10567. They do not exceed 87% of hydraulic lifting capacity or 75% of tipping load. Lifting capacities marked with an asterisk (*) are limited by hydraulic capacity rather than tipping load.
- Operator should be fully acquainted with the Operator's and Maintenance Instructions before operating this machine. Rules for safe operation of equipment should be adhered to at all times.
- Lift capacities apply to only machine as originally manufactured and normally equipped by KOBELCO CONSTRUCTION MACHINERY CO., LTD.