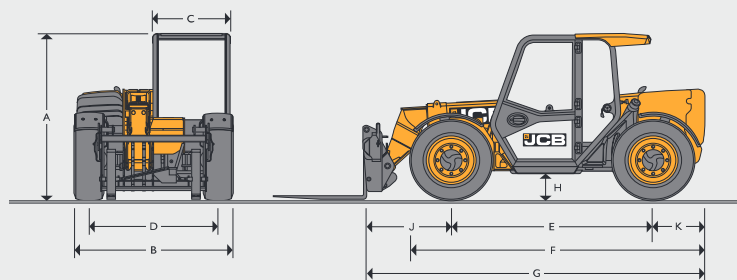
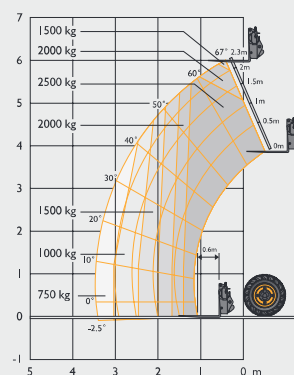


## STATIC DIMENSIONS



			525-60 Agri Plus
A	Overall height	m	1.97
B	Overall width (over tyres)	m	1.84
C	Inside width of cab	m	0.88
D	Front track	m	1.52
E	Wheelbase	m	2.39
F	Overall length to front tyres	m	3.48
G	Overall length to front carriage	m	4
H	Ground clearance	m	0.33
J	Front wheel centre to carriage	m	1.02
K	Rear wheel centre to rear face	m	0.6
	Outside turn radius (over tyres) 4WS	m	3.4
	Carriage roll back angle	degrees	11
	Carriage dump angle	degrees	114
	Weight	kg	5580
	Tyres	industrial traction	12.5/80x18

## LIFT PERFORMANCE



		525-60 Agri Plus
Maximum lift capacity	kg	2500
Lift capacity to full height	kg	1500
Lift capacity at full reach	kg	750
Lift height	m	6
Reach at maximum lift height	m	-0.25
Maximum forward reach (to front of carriage)	m	3.3
Reach with 1.2 tonne load	m	2.58

Complies with stability test AS 1418.19

## ENGINE

Latest Tier 4 Final technology and advanced design provides low fuel consumption, reduced noise, high torque and power output, total reliability and minimal maintenance. Two-stage, dry type air filter with primary and safety elements.

		525-60 Agri Plus
Manufacturer		JCB DIESEL BY KOHLER
Displacement	litr	2.5
No. of cylinders		4
Bore size	mm	88
Stroke	mm	102
Aspiration		Turbocharged cooled
<b>Power rating</b>		
Power @ 2200rpm	kW (hp)	55 (74)
<b>Torque rating</b>		
Torque @ 1500rpm	Nm	300

HYDRAULICS		
		525-60 Agri Plus
Operating system pressure	bar	260
Flow at system pressure @ 2200rpm	ltr/min	90
Hydraulic cycle times		
Boom raise		5.7
Boom lower		5.5
Boom extend		5.5
Retract		3.3
Bucket dump		1.9
Bucket crowd		2.2

TRANSMISSION			
Closed loop variable displacement pump with a continuously variable hydrostatic drive. Comprising of a hydraulic motor and control unit. Permanent 4 wheel drive.			
		525-60 Agri Plus	
		Forward	Reverse
Low range	kph	12	12
Hi-range	kph	30	30

ELECTRICS		
		525-60 Agri Plus
System voltage	Volt	12
Alternator output	Amp hour	100
Battery capacity	Amp hour	120

AXLES	
Front and rear drive axles: epicyclic hub reduction drive/steer axles with torque proportioning differentials.	

BRAKES	
Service brakes: Hydraulically operated self-adjusting, oil-immersed in-board multi-disc type mounted on front axle.	
Parking brake: SAHR Handbrake self adjusting, oil immersed in-board multi disc type mounted on front axle operated by in-cab switch.	

SERVICE FILL CAPACITIES		
		525-60 Agri Plus
Hydraulic system	litres	65
Fuel tank	litres	75

BOOM AND CARRIAGE	
Boom is manufactured from high tensile steel. Low maintenance, hard wearing pads. Carriage options include JCB Q-Fit, JCB compact toolkarrier, Skid-Steer, Eurohitch, Pin and Cone available.	

NOISE AND VIBRATION			
		Uncertainty	Measurement conditions
Noise at the operator station (LpA)	76 dB	+/- 1 dB	Determined in accordance with the test method defined in EN12053
Noise emission from the machine (LWA)	103 dB	+/- 1 dB	Guaranteed equivalent sound power (external noise) determined in accordance with the dynamic test conditions defined in 2000/14/EC
Whole body vibration (m/s²)	0.37	0.18	ISO 2631-1:1997 normalised to an 8h reference period and based upon a test cycle defined in SAE J11166
Hand-arm vibration (m/s²)	<2.5	N/A	ISO 5349-2:2001 dynamic test conditions

STANDARD/OPTIONAL EQUIPMENT					
		AGRI PLUS			AGRI PLUS
ENGINE AND COOLING				CAB	
74hp JCB Diesel by Kohler Engine	●			ROPS/FOPS safety structure*	●
Widcore cooling pack & Reverse fan	●			Laminated screen	●
Auto reversing fan	○			Fully adjustable mechanical seat	●
				Air suspension seat	○
TRANSMISSION / AXLES					
2 speed transmission 20kph (TÜV)	○			Interior light	●
2 speed transmission 30kph	●			Tilt and telescopic steering column	●
Forward / reverse controls on joystick	●			2 speed front and rear wash/wipe	●
Column mounted transmission selector	●			Roof wiper	●
Limited slip front differential	○			Radio speaker installation	●
Varispeed transmission	○			12V power socket	●
				7-speed heater fan	●
				Air conditioning	○
HYDRAULICS					
Servo controls	●			Front and roof screen blinds	●
Flow sharing hydraulics	●			Single lever joystick controls	●
Proportional boom and auxiliary controls	●			Loader control isolator	●
Adjustable constant flow hydraulics	●			External rear view mirrors	●
90 l/min variable displacement piston pump	●			Fire extinguisher	○
Auxiliary venting	●			Front screen guard	○
Hose burst check valves	●				
JCB Adaptive load control	●			ELECTRICAL	
JCB Smoothride system	○			Road lights front and rear	●
End damped boom ram	●			Reverse lights	●
				Battery isolator	●
STEERING				Rotating beacon	○
3 steer modes	●			Front and rear worklights	○
Manual selectable steer modes	●			Boom worklights	○
Electric selectable steer modes	○			Liveline telematics	○
				Key immobiliser	○
				Key pad immobiliser	○
				Reverse alarm	●
				Towing facility with trailer lighting	○
● STANDARD					
○ OPTIONAL					
				* Conforms to ROPS ISO 3471 and FOPS ISO 3449.	