

### 3. Specifications

#### ■ Specifications MHP13AT

SPECIFICATIONS	MHP13AT	
Nominal working height	12.9m	42.3'
Maximum height to basket floor	10.9m	35.8'
Maximum outreach	6.4m	21.0'
Maximum width of base		
Stabilisers retracted	1.6m	5.2'
Stabilisers extended	3.6m	11.8'
Safe working load (unrestricted)	215kg	474lbs
Platform size	1.15 x 0.70m	3.8' x 2.3'
Construction	Steel	Steel
Travelling height	2m	6.6'
Overall length	4.7m	15.4'
Maximum towing speed	80km/h	50mph
Turntable rotation	540° Non continuous	
Trailer tongue weight (approximately)	Less than 100kg	Less than 225lbs
Maximum rated axle capacity	2000kg	4409lbs
Insulation rating	Nil (on standard models)	
Weight	1460kg (Petrol model)	3218lbs (Petrol model)
Allowable manual force	400N	
Maximum permitted chassis inclination	1°/1°	
Maximum load on stabilisers	978kg	2156lb

#### □ Recommended Hydraulic Oil

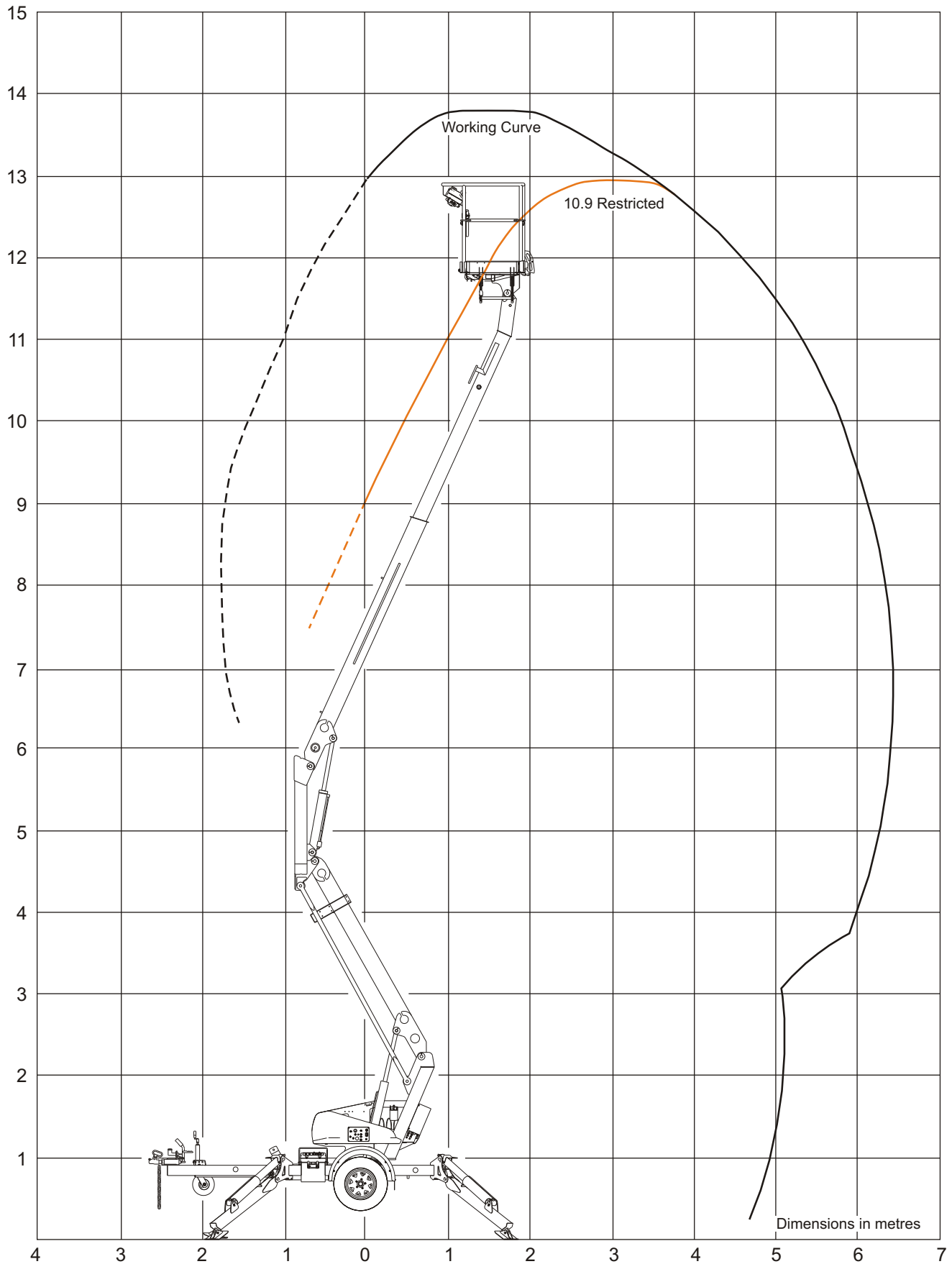
Shell Tellus 32 or Castrol AWS 32 or similar

#### ■ Engine Data

Engine Make	Honda (gasoline)
Model	GX 160
Engine type	4-stroke, over head valve, 1 cylinder
Displacement	163 cm <sup>3</sup> (9.9 cu-in)
Bore x Stroke	68 x 45 mm (2.7 x 1.8 in)
Max. output	4 kW/4,000 rpm
Max. torque	1.1 kg-m (8.0 ft-lb)/ 2500 rpm
Fuel	gasoline
Fuel Grade	automotive gasoline (unleaded or low leaded preferred)
Fuel consumption	230 g/PSh
Cooling system	Forced air
Ignition system	Transistor magneto
PTO shaft rotation	Counterclockwise
Oil Capacity	0.60 litres (0.60 US qt, 0.53 Imp qt)
Oil Grade	SAE 10W-30

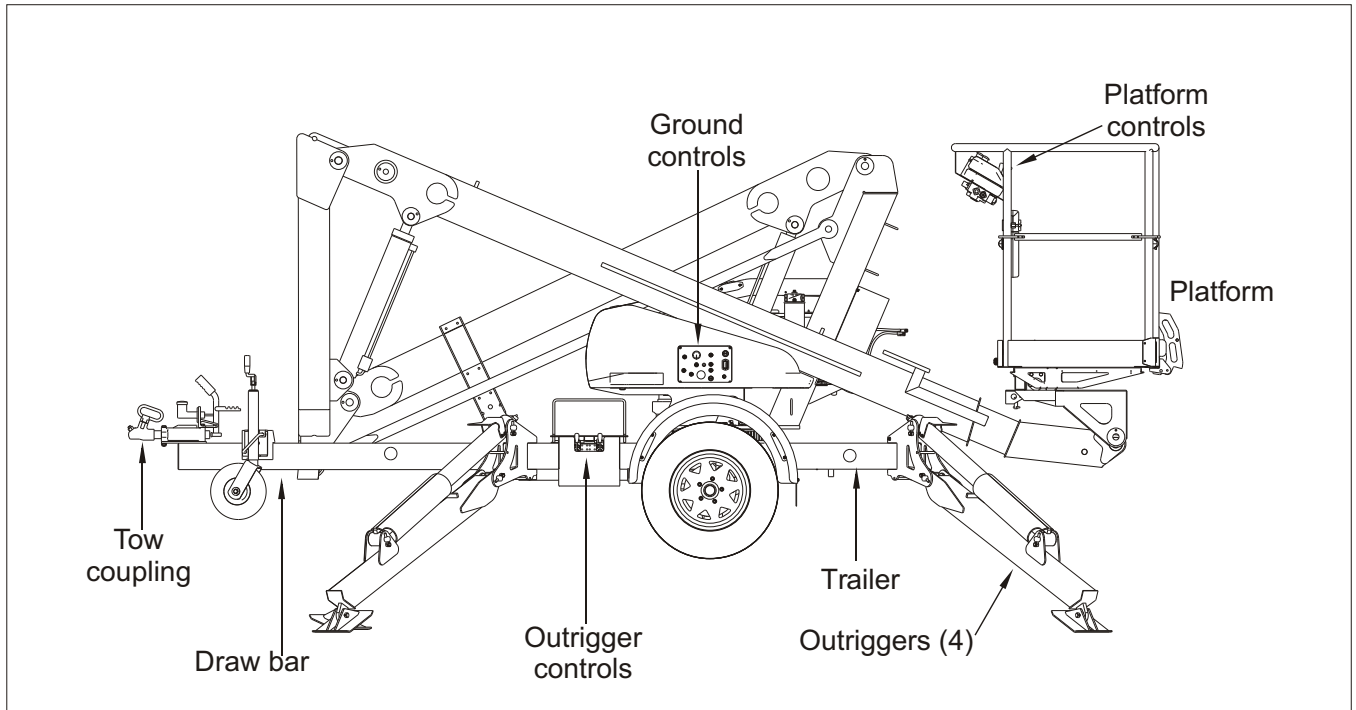
### 3. Specifications

#### ■ Working Envelope - MHP14AT, MHP13AT

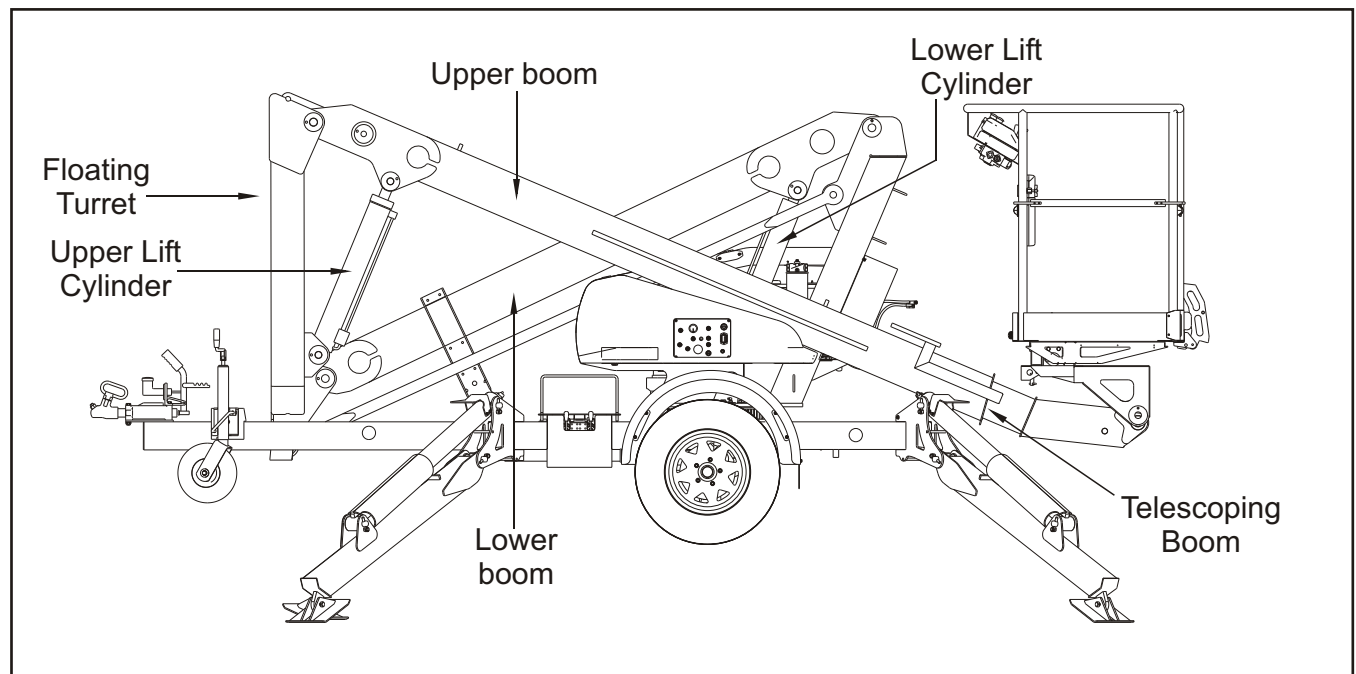


#### ■ Nomenclature

##### □ Right side view of machine



##### □ Booms identification



### 3. Specifications

---

☐ Left side view of machine

