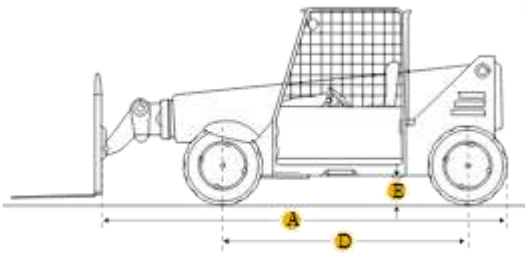
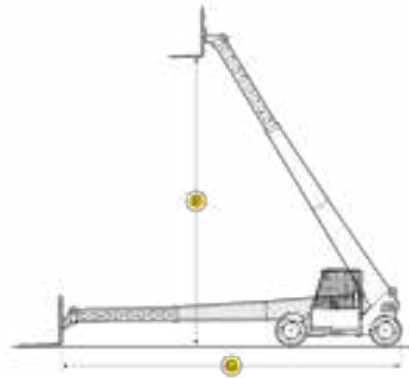
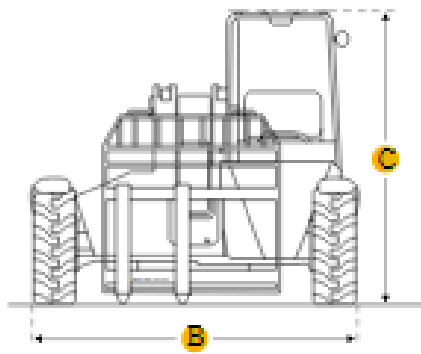


JCB 535-95 Telescopic Forklift



Dimensions

A
Length To Fork Face 4990mm

B
Width Over Tires 2360mm

C
Overall Height 2490mm

D
Wheelbase 2750mm

E
Ground Clearance 400mm

Dump Angle 24degrees

Turning Radius Outside Tires 3700mm

Weight 8215kg

Lift

F
Max Lift Height 9500mm

G

Max Forward Reach	6520mm
Max Lift Capacity	3500kg
Max Load At Max Height	1600kg
Max Load At Max Reach	550kg

Specifications

Engine

Number Of Cylinders	4
Engine Make	2257
Engine Model	JCB EcoMAX T4i/IIIB
Gross Power	61.6kw
Power Measured @	2200rpm
Max Torque	308Nm
Torque Measured @	1200rpm
Displacement	4.4L
Aspiration	turbocharged cooled

Operational

Operating Weight	3500kg
Fuel Capacity	125L
Hydraulic System Fluid Capacity	113L
Operating Voltage	12V
Alternator Supplied Amperage	95amps
Tire Size	15.5R24

Transmission

Lift Capacity To Full Height	1600kg
Lift Capacity At Full Reach	500kg
Transmission Type	4-speed powershift
Number Of Forward Gears	4
Number Of Reverse Gears	4
Max Speed – Forward	32km/h
Max Speed – Reverse	32km/h

Hydraulic System

Extend	10.5sec
Bucket Crowd	3.5sec
Retract	11.2sec
Max Operating Pressure	241 bar
Hydraulic Pump	82 L

Hydraulic

Pump Flow Capacity	82L/min
Relief Valve Pressure	24131.7kPa

Hydraulic System

Raise Time	9.1sec
Dump Time	2.4sec
Lower Time	7.7sec