

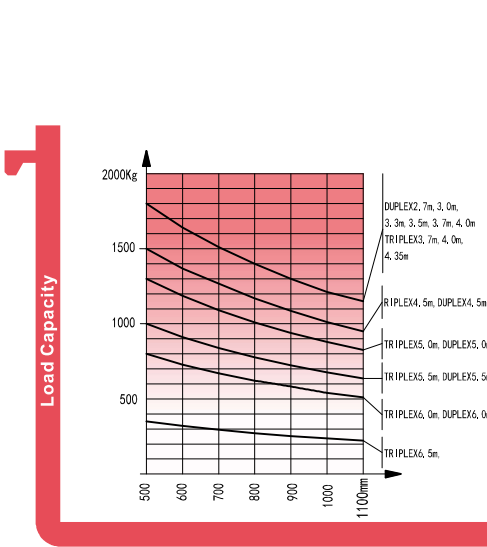
# Forklift Specification

2WD 1.8T/2.5T/3.5T				2WD	2WD	2WD		
General	1	Model		FD18T-C2WE3	FD25T-C2WE3	FD35T-C2WE3		
	2	Power type		Diesel				
	3	Rated capacity	Kg	1800	2500	3500		
	4	Load centre	mm	500				
	5	Lifting height	mm	3000				
	6	Height	mm	105	160	165		
	7	Fork size	L×W×T	mm	1070×100×35	1070×122×40	1220×122×45	
	8	Fork regulating range	Min./Max.	mm	200-1000	250-1160	250-1160	
	9	Mast tilt angle	F/R	Deg	10/12			
	10	Front overhang	mm	509	586	601		
	11	Rear overhang	mm	520	520	520		
	12	Min.ground clearance(drive steer axle)	mm	255	270	270		
	Characteristic&Dimension	13	Overall dimensions	Length to face of fork (without fork)	mm	2990	2946	2956
		14		Overall width	mm	1450	1557.5	1600.5
		15		Mast lowered height	mm	2148	2265	2330
		16		Mast extended height (with backrest)	mm	4170	4175	4305
		17		Overhead guard height	mm	2260	2256.5	2276
		18	Turning radius	mm	2840	2870	2870	
19		Min. right angle stacking aisle width	Pallet size a <sub>12</sub> =1000,b <sub>12</sub> =1200	mm	4760	4860	4870	
20			Pallet size a <sub>12</sub> =1200,b <sub>12</sub> =800	mm	4360	4460	4470	
Performance		20	Travel(Laden/Unladen)	Km/h	20/18	20/18	22/22	
		21	Speed	Lifting(Laden)	mm	610	600	450
	22	Lowering(Laden)		mm	450	445	500	
	23	Max. Drawbar pull(Laden)		KN	13	17	17	
	24	Max. Gradeability(Laden)	%	20	20	16		
Tyre	25	Tyre	Front	12-16.5-12PR	12-16.5-12PR	14-17.5-14PR		
	26		Rear	27×10-12-12PR	27×10-12-12PR	27×10-12-12PR		
	27	Tread	Front	mm	1123	1250.5	1250.5	
	28		Rear	mm	1205			
29	Wheelbase	mm	1880					
Weight	30	Self weight		kg	3960	4465	5180	
	31	Weight Distribution	Laden	Front axle	kg	4954	5990	7725
				Rear axle	kg	806	975	955
			Unladen	Front axle	kg	1584	1785	2070
Rear axle				kg	2376	2680	3110	
Power&Transmission	35	Battery	Voltage/Capacity	V/Ah	12/90	12/90	12/90	
	36	Engine	Model	4TNE98-BQFLC				
	37		Manufacture	YANMAR				
	38		Rated output/r.p.m.	Kw	42.1/2300			
	39		Rated torque/r.p.m.	N.m	196.3/1700			
	40		No. of cylinder	4				
	41		Bore×Stroke	mm	98×110			
	42		Displacement	L	3,318			
	43	Fuel tank capacity	L	55				
	44	Transmission	Manufacture	China				
	45		Type	Powershift	Powershift	Powershift		
46	Stage	F/R	1/1	1/1	1/1			
47	Operating pressure		Mpa	16.5	20	20		

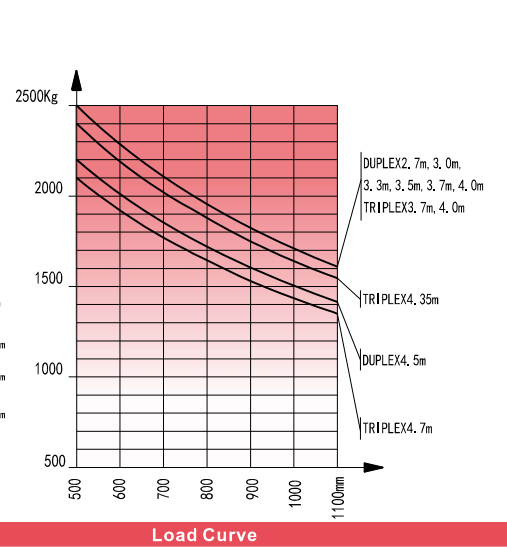
Compact 4WD 1.8T/2.5T/3.5T										
General	1	Model	FD18T-C4WV3	FD25T-C4WV3	FD18T-C4WE3	FD25T-C4WE3	FD35T-C4WE3			
	2	Power type	Diesel							
	3	Rated capacity	Kg	1800	2500	1800	2500	3500		
	4	Load centre	mm	500	500	500	500	500		
	5	Lifting height	mm	3000	3000	3000	3000	3000		
	6	Free lift	mm	105	160	105	160	165		
	7	Fork size	L×W×T	mm	1070×100×35	1070×122×40	1070×100×35	1070×122×40	1220×122×45	
	8	Fork regulating range	Min./Max.	mm	200-1315	250-1310	200-1315	250-1310	250-1500	
	9	Mast tilt angle	F/R	Deg	10/12					
	10	Front overhang	mm	520	586	520	586	601		
	11	Rear overhang	mm	600						
	12	Min.ground clearance(drive steering axle)	mm	219						
	13	Min.ground clearance(chassis) (Unladen/Laden)	mm	230/215	230/215	230/215	230/215	224/230		
	14	Min.ground clearance(mast) (Unladen/Laden)	mm	275/250	270/255	275/250	270/255	270/250		
	15	Ground clearance (drawbar pin)	mm	354.5	354.5	354.5	354.5	430		
	16	Height from seat surface to overhead guard inner side	mm	990	990	990	990	1043		
	Characteristic&Dimension	17	Overall dimensions	Length to face of fork (without fork)	mm	3000	3066	3000	3066	3081
		18		Overall width	mm	1450	1450	1450	1450	1600
		19		Mast lowered height	mm	2145	2235	2145	2235	2330
		20		Mast extended height (with backrest)	mm	4140	4175	4140	4175	4305
		21		Overhead guard height	mm	2256	2256	2256	2256	2276
		22	Turning radius	mm	3120	3120	3120	3120	3120	
		23	Min. right angle stacking aisle width	Pallet size a <sub>12</sub> =1000,b <sub>12</sub> =1200	mm	4629	4706	4629	4706	4921
		24		Pallet size a <sub>12</sub> =1200,b <sub>12</sub> =800	mm	4829	4906	4829	4906	4871
		25	Min. right angle stacking aisle width(pallet size a <sub>12</sub> =1200,b <sub>12</sub> =1200)	mm	2670		2670		2725	
Performance		26	Speed	Travel(Unladen/Laden)	Km/h	18/17	18/17	20/19	20/19	19/18
	27	Lifting(Unladen/Laden)		mm	620/590	620/570	640/610	650/600	510/485	
	28	Lowering(Unladen/Laden)		mm	420/450	510/450	420/450	510/450	500/450	
	29	Max. Drawbar pull	KN	31	38	38	38	38		
	30	Max. Gradeability	%	60	50	80	50	45		
	31	Braking distance	m	s6		s6		s6		
	Tyre	32	Tyre	Front	12-16.5-12PR	12-16.5-12PR		14-17.5L-14PR		
33		Rear		10.0/75-15.3	10.0/75-15.3		10.0/75-15.3			
34		Tyre pressure(Front/Rear)	Mpa	0.62/0.55	0.62/0.55		0.55/0.55			
35		Tread	Front	mm	1123	1123		1250		
36			Rear	mm	1190		1190			
37		Ground clearance (Front tyre centre) (Unladen/Laden)	mm	405,5/385		405,5/385		450,5/425		
38		Ground clearance (Rear tyre centre) (Unladen/Laden)	mm	370/350		370/350		370/385		
39		Wheelbase	mm	1880		1880		1880		
Weight	40	Self weight		kg	4255	4830	4255	4830	5545	
	41	Weight Distribution	Laden	Front axle	kg	4602	6597	4602	6597	7872
	42			Rear axle	kg	1453	733	1453	733	1073
	43		Unladen	Front axle	kg	1702	2173	1702	2173	2345
	44			Rear axle	kg	2553	2657	2553	2657	3100
	45	Battery	Voltage/Capacity	V/Ah	12/90					
	Power&Transmission	46	Engine	Model	S4S		4TNE98-BQFLC			
47		Manufacture		MITSUBISHI		YANMAR				
48		Rated output/r.p.m.		Kw	35.3/2250		42.1/2300			
49		Rated torque/r.p.m.		N.m	182/1800		196.3/1700			
50		No. of cylinder		4		4				
51		Bore×Stroke		mm	94×120		98×110			
52		Displacement		L	3,331		3,318			
53		Fuel tank capacity	L	55						
54		Transmission	Manufacture	China		China				
55			Type	Powershift		Powershift				
56		Stage	F/R	2/1		2/1				
57	Operating pressure		Mpa	16.5	20	16.5	20	20		

# Mast Specification

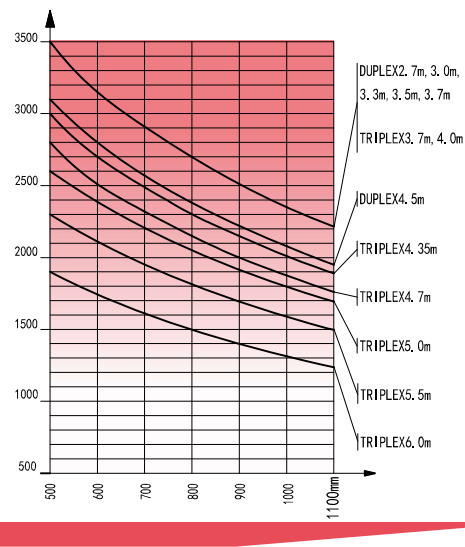
Type	Model	Max. fork height	Overall height									Free lift			Front Overhang			Tilt range		Capacity at max. height Loand Center 500mm					
			Lowered			With backrest			Without backrest			1.8T	2.5T	3.5T	1.8T	2.5T	3.5T	FWD	BWD	Without side shift carriage			With side shift carriage		
			1.8T	2.5T	3.5T	1.8T	2.5T	3.5T	1.8T	2.5T	3.5T									1.8T	2.5T	3.5T	1.8T	2.5T	3.5T
			mm	mm	mm	mm	mm	mm	mm	mm	mm	mm	mm	mm	mm	mm	mm	mm	mm	mm	mm	mm	mm	mm	mm
wide view 2-stage mast	M270	2700	1998	2085	2180	105	160	165	105	160	165	509	585	600	10°	12°	1800	2500	3500	1800	2500	3200			
	M300	3000	2148	2235	2330	105	160	165	105	160	165	509	585	600	10°	12°	1800	2500	3500	1800	2500	3200			
	M330	3300	2298	2385	2480	105	160	165	105	160	165	509	585	600	10°	12°	1800	2500	3500	1800	2500	3200			
	M350	3500	2398	2485	2580	105	160	165	105	160	165	509	585	600	10°	12°	1800	2500	3500	1800	2500	3200			
	M370	3700	2498	2585	2680	105	160	165	105	160	165	509	585	600	10°	12°	1800	2500	3500	1800	2500	3200			
	M400	4000	2698	2785	2880	105	160	165	105	160	165	509	585	600	10°	12°	1800	2500	3400	1800	2500	3100			
	M450	4500	2948	3035	3130	105	160	165	105	160	165	509	585	600	10°	12°	1500	2200	3100	1400	2100	2900			
	M500	5000	3198	---	---	105	---	---	105	---	---	509	---	---	6°	6°	1300	---	---	1200	---	---			
	M550	5500	3498	---	---	105	---	---	105	---	---	509	---	---	6°	6°	1000	---	---	900	---	---			
	M600	6000	3748	---	---	105	---	---	105	---	---	509	---	---	6°	6°	800	---	---	400	---	---			
Full free 3-stage mast	TFM360	3600	1908	---	---	725	---	---	1105	---	---	509	---	---	10°	12°	1800	---	---	1800	---	---			
	TFM370	3700	---	1990	2115	---	798	790	---	1243	1246	---	590	620	---	---	---	2500	3500	---	2400	3100			
	TFM400	4000	2033	2080	2205	850	888	890	1230	1333	1336	509	590	620	10°	12°	1800	2500	3400	1800	2400	3100			
	TFM435	4350	2158	2205	2330	980	1013	1015	1360	1458	1461	509	590	620	10°	12°	1800	2400	3000	1600	2200	2900			
	TFM450	4500	2208	---	---	1030	---	---	1410	---	---	509	---	---	10°	12°	1500	---	---	1400	---	---			
	TFM470	4700	---	2320	2445	---	1128	1130	---	1573	1576	---	590	620	---	---	---	2100	2800	---	1900	2500			
	TFM480	4800	2308	---	---	1130	---	---	1510	---	---	509	---	---	10°	12°	1400	---	---	1300	---	---			
	TFM500	5000	2408	2455	2580	1230	1263	1265	1610	1708	1710	509	590	620	6°	6°	1300	1900	2600	1200	1600	2300			
	TFM550	5500	2573	2620	2745	1390	1428	1430	1770	1873	1875	509	590	620	6°	6°	1000	1500	2300	900	1200	2100			
	TFM600	6000	2758	2805	2930	1580	1613	1615	1960	2058	2060	509	590	620	6°	6°	800	1200	1900	400	800	1600			
TFM650	6500	2973	3020	3145	1790	1828	1830	2180	2273	2275	509	590	620	6°	6°	350	700	1300	200	400	1100				



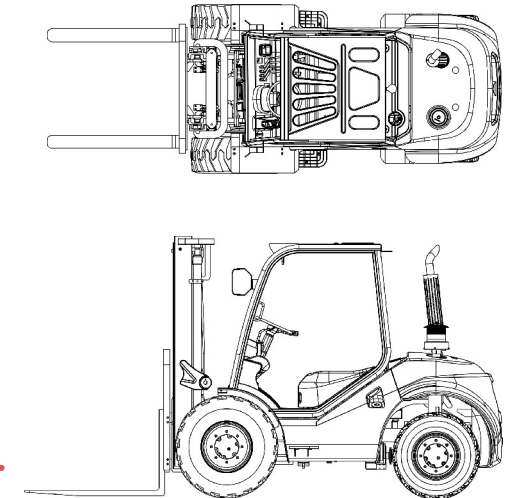
1.8T Load Chart



2.5T Load Chart



3.5T Load Chart

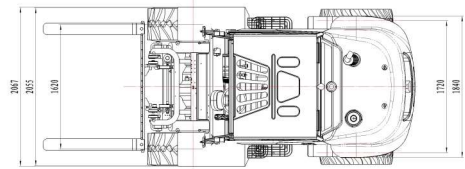
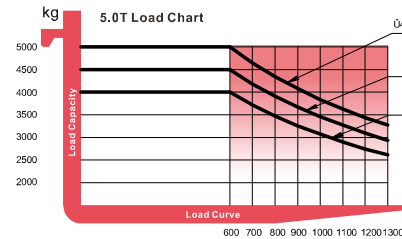
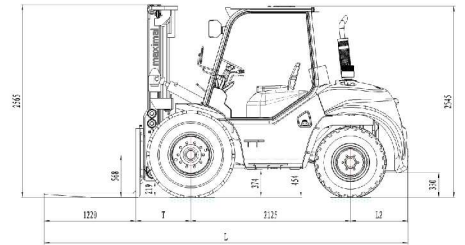
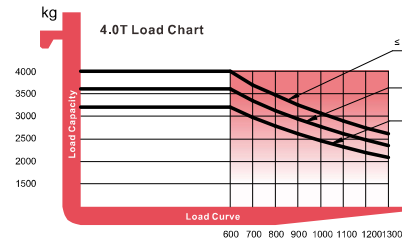


# Forklift Specification

# Mast Specification

2WD 4T/5T						
General	1	Model		FD40T-C2WP3	FD50T-C2WP3	
	2	Power type		Diesel	Diesel	
	3	Rated capacity	Kg	4000	5000	
	4	Load centre	mm	600	600	
	5	Lifting height	mm	3000	3000	
	6	Free lift height	mm	145	145	
	7	Fork size	L×W×T	mm	1220*150*50	1220*150*55
	8	Fork regulating range	Min./Max.	mm	300/1954	300/1954
	9	Mast tilt angle	F/R	Deg	15°/15°	15°/15°
Characteristics&Dimension	10	Front overhang	mm	732	732	
	11	Rear overhang	mm	764	764	
	12	Ground clearance	Middle of frame(Unladen/Laden)	mm	374/354	374/354
	13		Bottom of mast(Unladen/Laden)	mm	320/320	320/320
	14	Overall dimensions	Length to face of fork(without fork)	mm	3622	3622
	15		Overall length(with fork)	mm	4837	4837
	16		Wheel width	mm	2055	2055
	17		Frame width	mm	2067	2067
	18		Mast lowered height	mm	2565	2565
	19	Mast extended height(with backrest)	mm	4170	4170	
	20	Overhead guard height	mm	2545	2545	
	21	Min. turning radius	mm	3550	3550	
Performance	22	Speed	Travel(Unladen/Laden)	Km/h	22/21	22/21
	23		Lifting(Unladen/Laden)	mm/s	570/500	570/500
	24	Pressure	Laden lifting(normal/max)	Mpa	15.6/19	15.6/19
	25		Unladen lifting(normal/max)	Mpa	2.6/19	2.6/19
	26		Laden tilting(normal/max)	Mpa	front 1: rear 12/ front 19: rear 19	
	27	Max. Drawbar pull(Laden/unladen)	KN	50	50	
28	Max. Gradeability(Laden/unladen)	%	30	30		
Tyre	29	Tyre	Front		445-65-22.5PR/1175	445-65-22.5PR/1175
	30		Rear		12.5/80-18/958	12.5/80-18/958
	30	Tread	Front	mm	1620	1620
31	Rear		mm	1720	1720	
Weight	31	Wheelbase	mm	2125	2125	
	32	Self weight	kg	7960	8450	
Power&Transmission	33	Braking distance	m	≤6	≤6	
	34	Engine	Model		1104C-44T	1104C-44T
	35		Manufacture		PERKINS	PERKINS
	36		Rated output/r.p.m.	Kw	74.5/2300	74.5/2300
	37		Rated torque/r.p.m.	N.m	415/1350	415/1350
	38		No. of cylinder		4	4
	39		Bore×Stroke	mm	105×127	105×127
	40	Displacement	L	4.4	4.4	
	41	Transmission	Manufacture		China	China
	42		Type		Powershift	Powershift
	43		Stage	F/R	2/1	2/1

Type	Model	Max. fork height	Overall height Lowered	Free lift		Front Overhang		Tilt range		Capacity			
				With backrest	Without backrest	4.0T	5.0T	FWD	BWD	capacity at max. height			
										Without side shift carriage		With side shift carriage	
		mm	mm	mm	mm	mm	mm	Deg	Deg	kg	kg	kg	kg
wide view 2-stage mast	M300	3000	2565	145	145	727	732	15	15	4000	5000	3600	4700
	M330	3300	2715	145	145	727	732	15	15	4000	5000	3600	4700
	M350	3500	2815	145	145	727	732	15	15	4000	5000	3600	4700
	M370	3700	2915	145	145	727	732	15	15	4000	5000	3600	4700
	M400	4000	3115	145	145	727	732	15	15	4000	5000	3600	4700
Full free 3-stage mast	M450	4500	3365	145	145	727	732	15	15	3600	4500	3240	4050
	M500	5000	3615	145	145	727	732	15	15	3200	4000	2800	3600
	TFM400	4000	2560	1000	1350	760	765	15	15	4000	5000	3600	4500
	TFM435	4350	2685	1125	1475	760	765	15	15	3600	4500	3240	4050
	TFM450	4500	2736	1176	1526	760	765	15	15	3200	4000	2880	3600
	TFM470	4700	2802	1242	1592	760	765	15	15	2950	3700	2680	3350
	TFM500	5000	2935	1375	1725	760	765	10	15	2640	3300	2360	2950
TFM540	5400	3060	1500	1850	760	765	10	15	1920	2400	1720	2150	
TFM600	6000	3300	1740	2090	760	765	10	15	1600	2000	1400	1800	



# Forklift Specification

# Mast Specification

4WD 2.5T/3.5T							
General	1	Model	FD25J-C4WE	FD35J-C4WE			
	2	Power type	diesel	diesel			
	3	Rated capacity	Kg	2500	3500		
	4	Load centre	mm	500	500		
Characteristics&Dimension	5	Lift height	mm	3000	3000		
	6	Free lift height	mm	160	165		
	7	Fork size	L×W×T	1070×125×40	1220×125×45		
	8	Fork regulating range	Min./Max.	250-1560	250-1560		
	9	Mast tilt angle	F/R	10/12	10/12		
	10	Front overhang	mm	680	680		
	11	Rear overhang	mm	590	597		
	12	Min.ground clearance	mm	394.5	410		
	13	Length to face of fork (without fork)	mm	3182	3227		
	14	Overall width	mm	1980	1980		
	15	Mast lowered height	mm	2454	2470		
	16	Mast extended height (with backrest)	mm	4270	4400		
	17	Overhead guard height	mm	2250	2250		
	18	Min. turning radius	mm	4275	4295		
	19	Min. right angle stacking aisle width(add load length and clearance)	mm	8375	8395		
Performance	20	Speed	Travel(Unladen)	Km/h	20	20	
	21		Lifting(Laden)	mm/s	540	450	
	22		Lowering(Laden)	mm/s	630	540	
	23	Max. Drawbar pull(Laden/unladen)	KN	34.3	34.3		
24	Max. Gradeability(Loaden)	%	38	38			
Tyre	25	Tyre	Front	405/70-20-14PR	405/70-20TL		
			Rear	10.0/75-15.3-14PR	10.0/75-15.3		
	26	Tread	Front	mm	1570	1570	
Weight	27		Rear	mm	1440	1440	
	28	Wheelbase	mm	1950	1950		
	29	Self weight	kg	4900	5750		
	30	Weight Distribution	Laden	Front axle	kg	6290	7990
	31			Rear axle	kg	1110	1260
32	Unladen		Front axle	kg	2265	2450	
33			Rear axle	kg	2635	3300	
Power&Transmission	33	Battery	Voltage/Capacity	VI/Ah	12/90		
	34	Engine	Model	4TNE98-BQFLC			
	35		Manufacture	YANMAR			
	36		Rated output/r.p.m.	Kw	42.1/2300		
	37		Rated torque/r.p.m.	N.m	196.3/1700		
	38		No. of cylinder	4			
	39		Bore×Stroke	mm	98×110		
	40	Displacement	L	3.319			
	41	Fuel tank capacity	L	3.319			
	42	Transmission	Manufacture	DANA			
	43		Type	Front axle	112		
44	Rear axle			211			
45	Transfer case			311			
46	Stage	F/R	1/1				
47	Static system pressure	Mpa	40				
48	Operating pressure(For attachments)	Mpa	20				
49	Min.right angle stacking aisle width	mm	2980	3000			

Type	Model	Overall height		Free lift				Front Overhang		Tilt range		Capacity			
		Lowered		With backrest		Without backrest		2.5T	3.5T	FWD	BWD	capacity at max. height			
		2.5T	3.5T	2.5T	3.5T	2.5T	3.5T	mm	mm	Deg	Deg	Without side shift carriage		With side shift carriage	
wide view 2-stage mast	M270	2320	2320	165	165	165	165	700	700	10	12	3500	3500	3200	3200
	M300	2470	2470	165	165	165	165	700	700	10	12	3500	3500	3200	3200
	M330	2620	2620	165	165	165	165	700	700	10	12	3500	3500	3200	3200
	M350	2720	2720	165	165	165	165	700	700	10	12	3500	3500	3200	3200
	M370	2820	2820	165	165	165	165	700	700	10	12	3500	3500	3200	3200
	M400	3020	3020	165	165	165	165	700	700	10	12	3400	3400	3100	3100
Full free 3-stage mast	M450	3270	3270	165	165	165	165	700	700	10	12	3100	3100	2900	2900
	TFM370	2255	2255	798	798	1243	1243	700	700	10	12	3500	3500	3100	3100
	TFM400	2345	2345	888	888	1333	1333	700	700	10	12	3500	3500	3100	3100
	TFM435	2470	2470	1013	1013	1458	1458	700	700	10	12	3000	3000	2900	2900
	TFM470	2605	2605	1128	1128	1573	1573	700	700	10	12	2800	2800	2500	2500
	TFM500	2720	2720	1263	1263	1708	1708	700	700	6	6	2800	2800	2500	2500
TFM550	2885	2885	1428	1428	1873	1873	700	700	6	6	2500	2500	2300	2300	
TFM600	3070	3070	1613	1613	2058	2058	700	700	6	6	2100	2100	1800	1800	

