

## PRE-OPERATION CHECK

**! NOTE:** Pre-operation checks should be made each time before using generator.

### FUEL

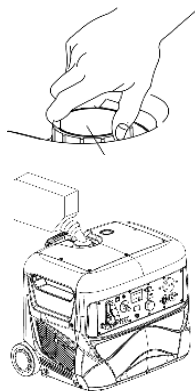
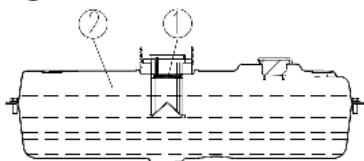
Remove the fuel tank cap. Add fuel up to the lower red mark of fuel filter, and then replace the fuel tank cap until you hear a clicking sound (Which means the fuel tank cap is fully tightened).

#### Recommended fuel:

Unleaded petrol: #92 or above

Fuel tank capacity: 7.0L

- ① Red mark in fuel filter
- ② Fuel level



**! NOTE:** If there is any spilled fuel, use a clean and dry soft cloth to wipe area to avoid corrosion on surface or plastic parts.

**! NOTE:** Only use recommended unleaded fuel. Other types may cause serious damage to engine and inner components.

**! WARNING:** Fuel is highly flammable and poisonous. Check and read SAFETY INFO (page 10) before refueling.

**! WARNING:** DO NOT fill above the red mark in the fuel filter as it may overflow if the fuel heats up and expands. Make sure to tighten the fuel tank cap after refueling.

**! WARNING:** DO NOT refuel with engine running. Allow generator to cool down for five minutes before refueling.

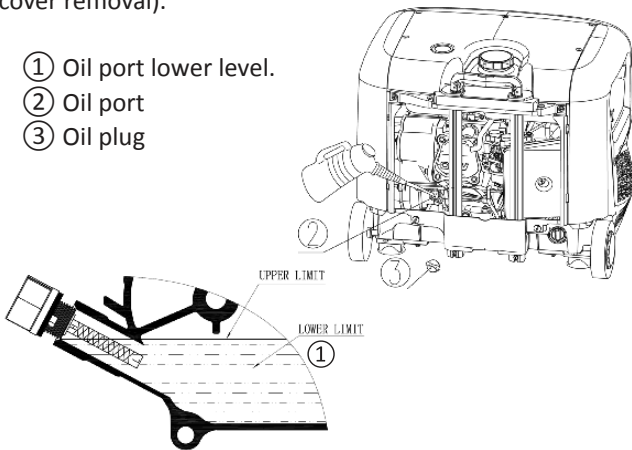
**! WARNING:** DO NOT leave generator in a hot car or directly in the sun for long periods of time. Fuel vapors can cause the fuel tank to expand, which can cause cracks/leaks to occur. Expansion may even cause an explosion.

## ENGINE OIL

For new unit or changing oil, place the generator horizontally, remove the maintenance cover (see page 28), take out oil plug and fill with 600ml of recommended oil until the oil reaches the lower level (see page 31).

When refilling, the oil level should be at the same level of oil port lower level. Assemble the oil plug and maintenance cover in reverse procedures (see page 28 for cover removal).

- ① Oil port lower level.
- ② Oil port
- ③ Oil plug



**! NOTE:** The generator leaves the factory without engine oil.

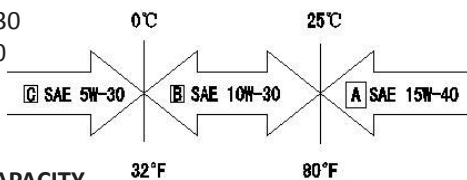
**! NOTE:** Do not tilt the generator when filling engine oil. This may result in overfilling and potential damage to the generator.

## RECOMMENDED ENGINE OIL

A: SAE15W-40

B: SAE10W-30

C: SAE5W-30



## ENGINE OIL CAPACITY

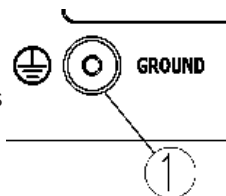
600ml

**! NOTE:** Do not over fill, fill to oil indicator line only.

## GROUND TERMINAL (EARTH BOLT/NUT)

The ground terminal on this generator is connected to NON-current carrying parts of the generator frame and to each AC outlet.

Before attaching a ground (earth) lead, consult with a qualified electrician on the intended use of this generator.



- ① Ground (earth) terminal

## BATTERY (MULTI-FUNCTION POWER PACK)

The generator uses a multi-function power pack as its battery for starting the generator.

This power pack also features multiple charging points. Including; two USB outlets, one MICRO USB outlet and a DC 12V outlet for charging a range of equipment such as mobile phones, laptops, etc. There is also a torch, a jump starter for emergency starting of a car, and a seatbelt cutter.

**! NOTE:** The generator leaves the factory with multi-function power pack not connected.

## CONNECT MULTI-FUNCTION POWER PACK

Ensure the multi-function power pack is connected before starting the generator. To access, remove the power pack cover and connect the two cables. See below.

- |                                       |                    |
|---------------------------------------|--------------------|
| ① Two screws                          | ④ Connecting cable |
| ② Battery cover                       | ⑤ Charging cable   |
| ③ Multi-function power pack (battery) |                    |

