

Specifications

Model		S-60 J
Height, working maximum	66 ft 10 in	20.4 m
Height, platform maximum	60 ft 10 in	18.5 m
Horizontal reach, platform maximum	40 ft 6 in	12.3 m
Maximum load capacity	660 lbs	300 kg
Maximum wind speed	28 mph	12.5 m/s
Platform rotation		160°
Platform leveling		self-leveling
Turntable rotation (degrees)	353° non-continuous	
Turntable tailswing, Riser down	5 ft 2 in	1.57 m
Turntable tailswing, Riser up	4 ft 1 in	1.24 m
Height, stowed maximum	8 ft 10 in	2.7 m
Length, stowed	31 ft 10 in	9.7 m
Width, standard tires	8 ft 2 in	2.49 m
Wheelbase	8 ft	2.4 m
Ground clearance, center	22 in	56.4 cm
Ground clearance, axle	12 in	31 cm
Turning radius (inside)	8 ft 1 in	2.46 m
Turning radius (outside)	18 ft 5 in	5.61 m
Platform dimensions, 6 foot (length x width)	72 in x 30 in	182 cm x 76 cm
Platform dimensions, 8 foot (length x width)	96 in x 36 in	244 cm x 91 cm
Weight	16,680 lbs	7,550 kg
(Machine weights vary with option configurations. See serial label for specific machine weight.)		
Airborne noise emissions		
Sound pressure level at ground workstation		83 dBA
Sound pressure level at platform workstation		77 dBA
Guaranteed sound power level		105 dBA
Total vibration value to which the hand/arm system is subjected does not exceed 2.5 m/s ² .		
Highest root mean square value of weighted acceleration to which the whole body is subjected does not exceed 0.5 m/s ² .		

Ambient operating temperature	-20° F to 120° F -29° C to 49° C	
Controls	12V DC proportional	
AC outlet in platform	Standard	
System voltage	12V	
Hydraulic pressure, maximum (boom functions)	3,200 psi	220 bar
Tire size	315/55 D20, 12 ply FF	
Fuel tank capacity	30 gallons	113.5 liters
Hydraulic tank capacity	21 gallons	79 liters

Maximum slope rating, stowed position, 4WD

Platform uphill	30% (17°)
Platform downhill	45% (24°)
Side slope	25% (14°)

Note: Slope rating is subject to ground conditions with one person in the platform and adequate traction. Additional platform weight may reduce slope rating.

Maximum allowable chassis inclination	Refer to "Tilt Sensor Activation Settings" section	
--	--	--

Drive speeds

Drive speed, stowed	3.0 mph	4.8 km/h
	40 ft/9.1 sec	12.2 m/9.1 sec
Drive speed, raised or extended	0.68 mph	1.1 km/h
	40 ft/40 sec	12.2 m/40 sec

Floor loading information

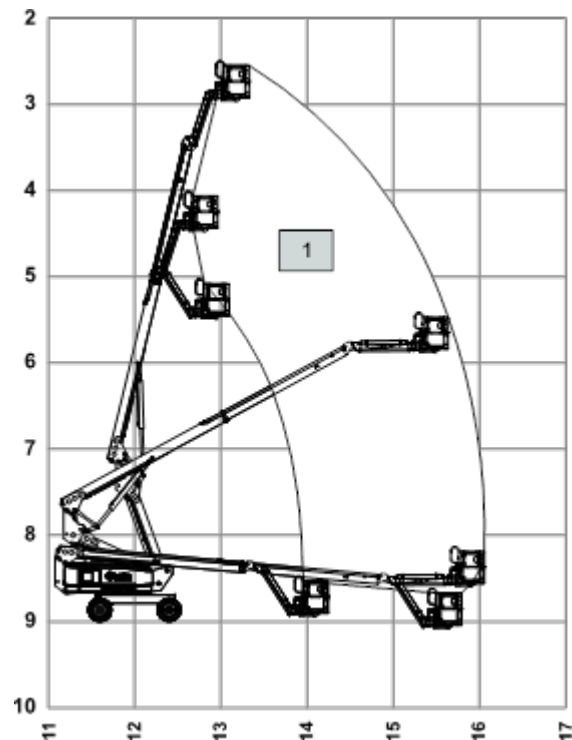
Tire load maximum	9,630 lbs	4,368 kg
Tire contact pressure	85 psi	5.96 kg/cm ² 585 kPa
Occupied floor pressure	215 psf	1,049 kg/m ² 10.28 kPa

Note: Floor loading information is approximate and does not incorporate different option configurations. It should be used only with adequate safety factors.

Continuous improvement of our products is a Genie policy. Product specifications are subject to change without notice or obligation.

Specifications

Range of Motion Chart - S-60 J



Maximum Platform Capacity

1 660 lbs 300 kg

Vertical Values

2	70 ft	21.34 m
3	60 ft	19.29 m
4	50 ft	15.24 m
5	40 ft	12.19 m
6	30 ft	9.14 m
7	20 ft	6.1 m
8	10 ft	3.05 m
9	0 ft	0 m
10	-10 ft	-3.05 m

Horizontal Values

11	-10 ft	-3.05 m
12	0 ft	0 m
13	10 ft	3.05 m
14	20 ft	6.1 m
15	30 ft	9.14 m
16	40 ft	12.19 m
17	50 ft	15.24 m